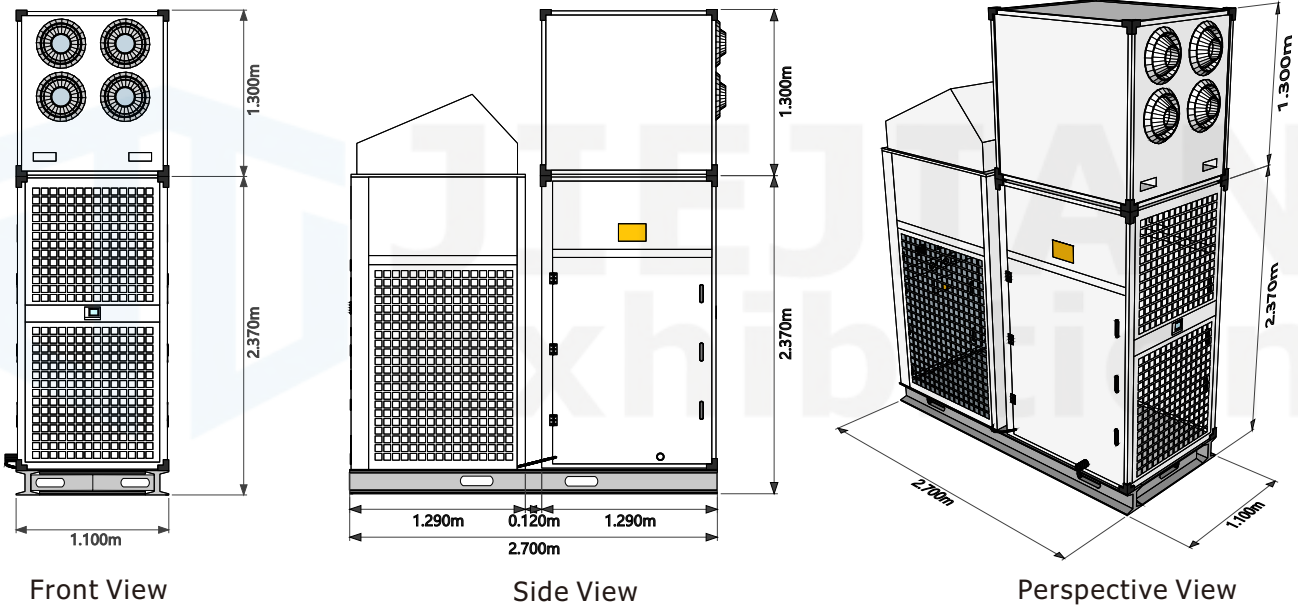


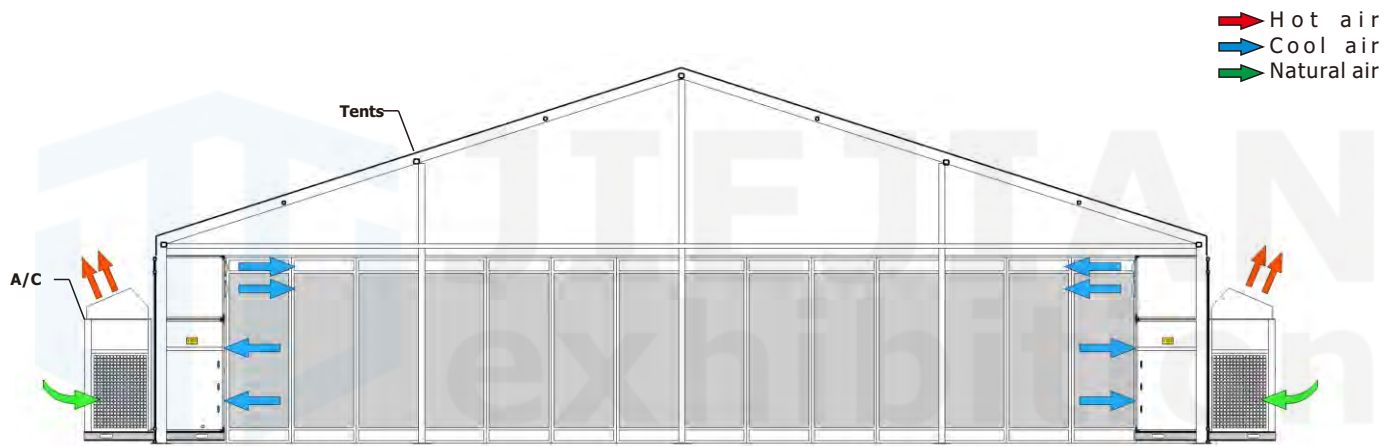
I. Specifications of 24 Ton AC Units

Cooling Capacity : 86kW(30HP、 24US.RT)	Wind Pressure : 400Pa
Cooling Air Flow : 16000 M ³ /H	Input Power : 35kW
Power Supply : 380V/3N/50HZ	Running Current : 60A
Outline Dimension : 2700x1100x3700mm (LxWxH)	Weight : 1000kg
Applicable Area : 1 unit for 300 square meters	Features: ease of transportation and assembly

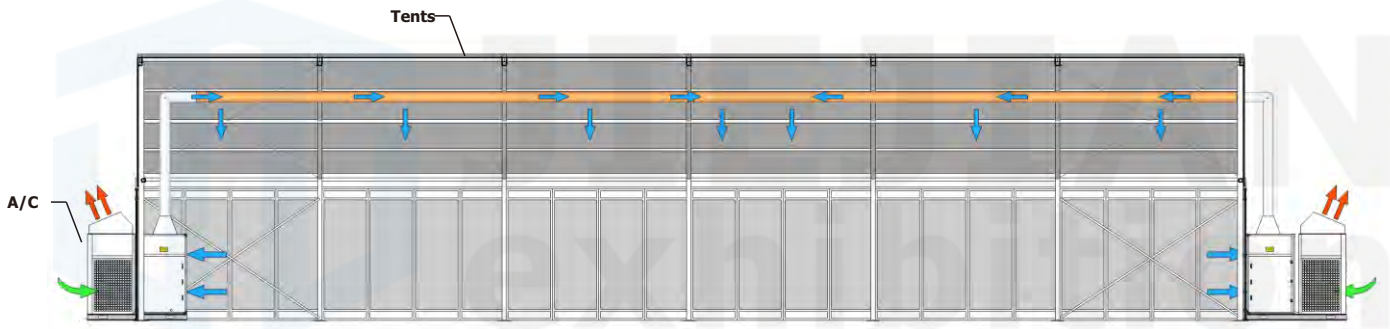
II. AC Unit Profile



III. Installation & Operation



Tent Air Conditioners Installed Inside and Outside



Duct Air Conditioner Installed Inside and Outside Tent

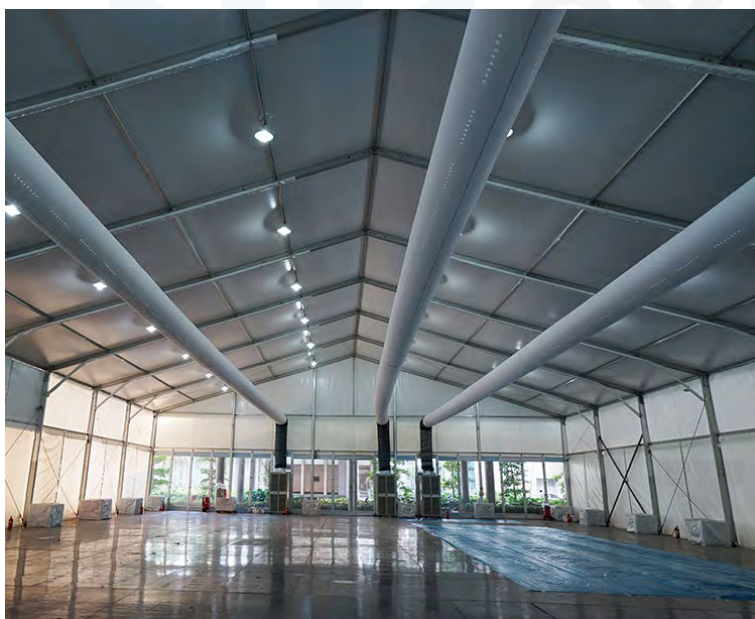
IV. Applications of Tent Air Conditioning



installed partly outside



installed totally outside



air conditioner duct



ac unit direct